



Development of Decision Support Tools for Barriers to Health Care in Ifanadiana District

- In the context of community health / Accessibility to health care
- **Problem:** Low access to health care in rural areas



- **Objective:** Estimate the real distance between each village in the district, its community site and the nearest health center (CSB)

- **Methodology**

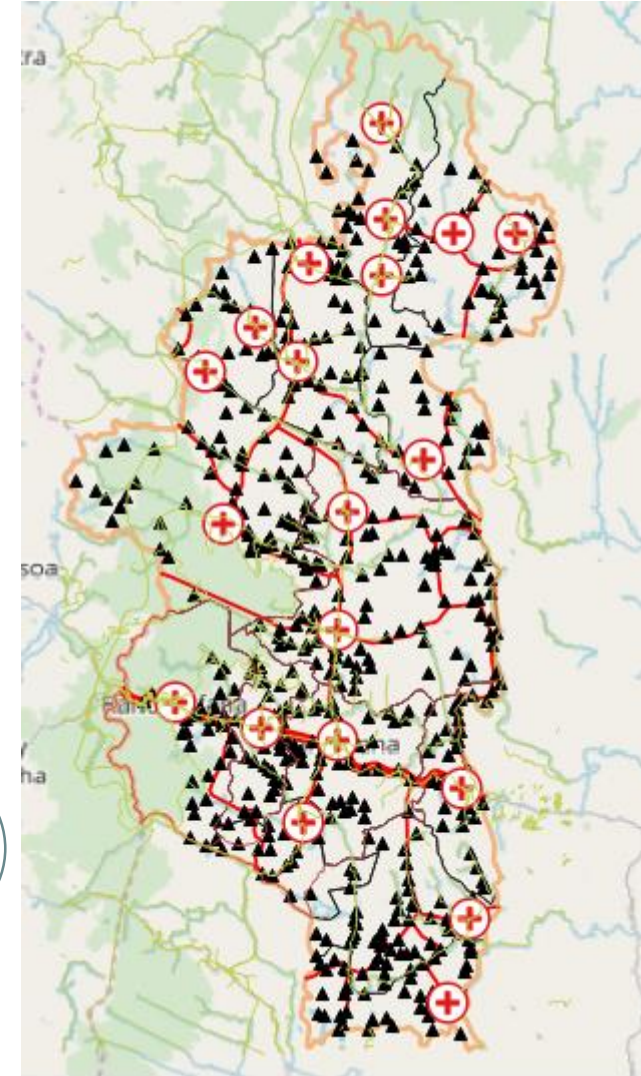
Collect Data
locality, road, path,
geographical
coordinates ...
(OpenstreetMap,
QGIS, GPS)

Data processing

Data analysis and
Map display of
course distance
(R, osrm package)

- **Results:**

Map that
represents the
optimal path
Nearest health
center



Name: ANDREAMBELOSON Tanjona Tahina

Mail: tahinatahina3@gmail.com